

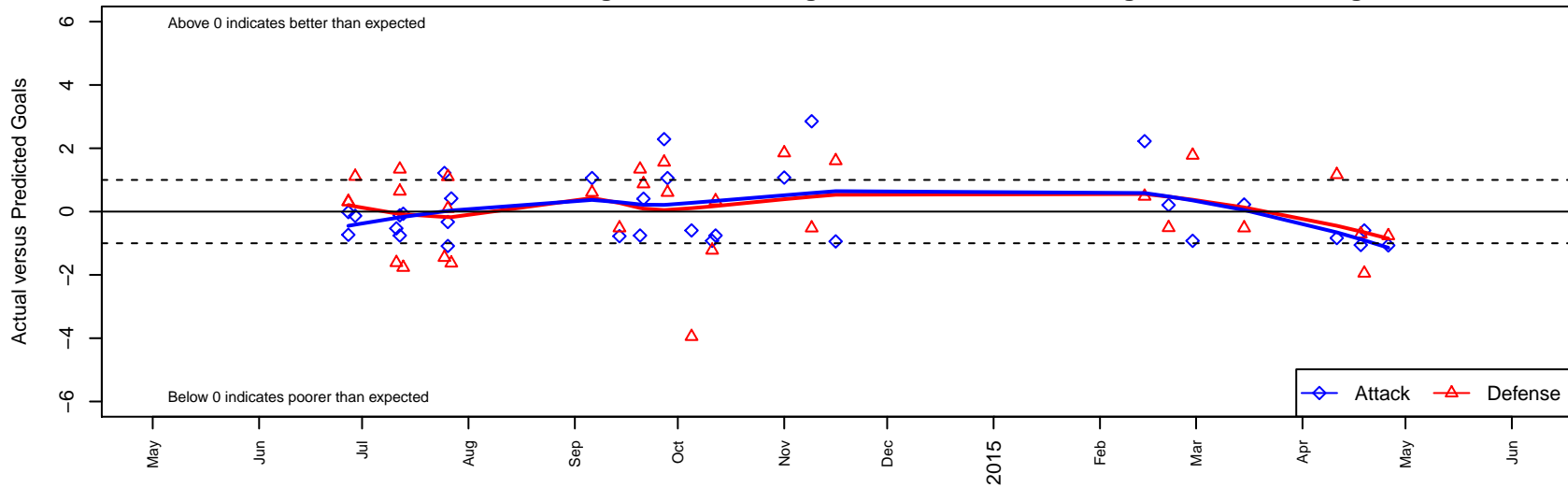
PCU Red G01

Portland City United SC
 Portland, OR
 G01 total strength=855
 attack=1.21 defense=1.22
 fall league = PTT-B G01 Championship
 spr league = Spr OYS G01 Div 1 Green

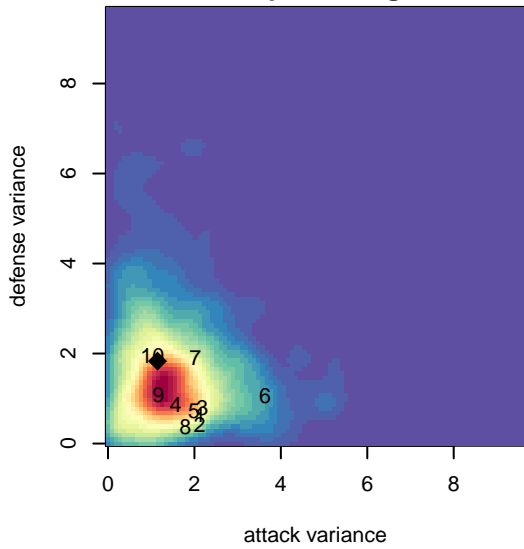
alt names used:
 PCU Red G01
 PCU 01G Red

Venues played:
 2014 Clash At the Border Silver/Bronze U13
 2014 PCU Summer Classic U13 Gold
 2014 Crossfire Select Cup GU13 Gold
 2014 PTT-B G01 Championship
 2014 OYS Presidents Cup G01
 2014 Spr OYS G01 Division 1 Green

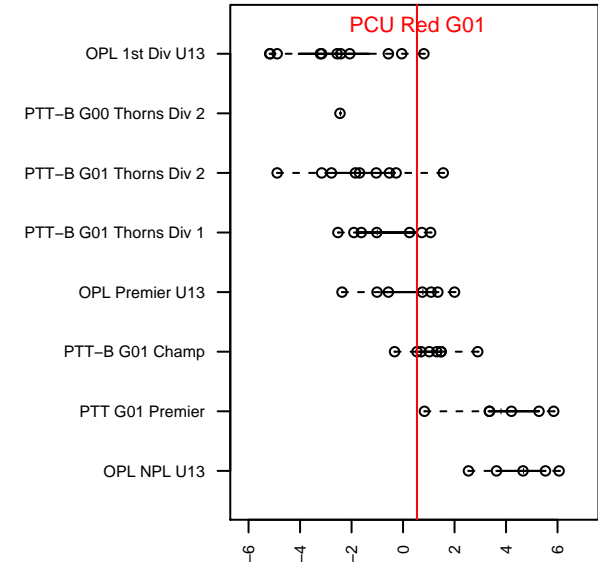
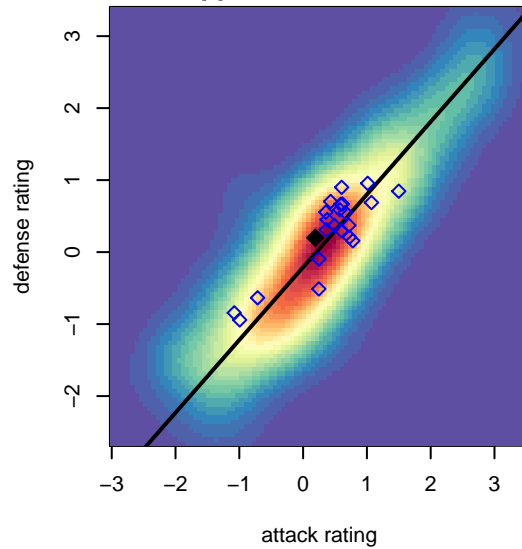
PCU Red G01
 Dots are actual minus expected GF (blue circles) and GA (red triangles).
 Blue line is smoothed change in attack strength. Red is smoothed change in defense strength.



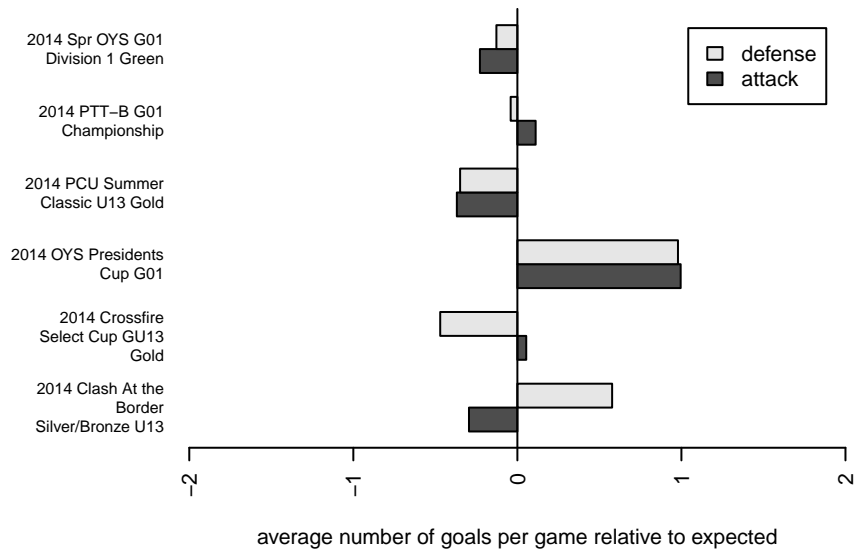
**attack and defense variance (black dot)
relative to other teams
and top 10 in region**



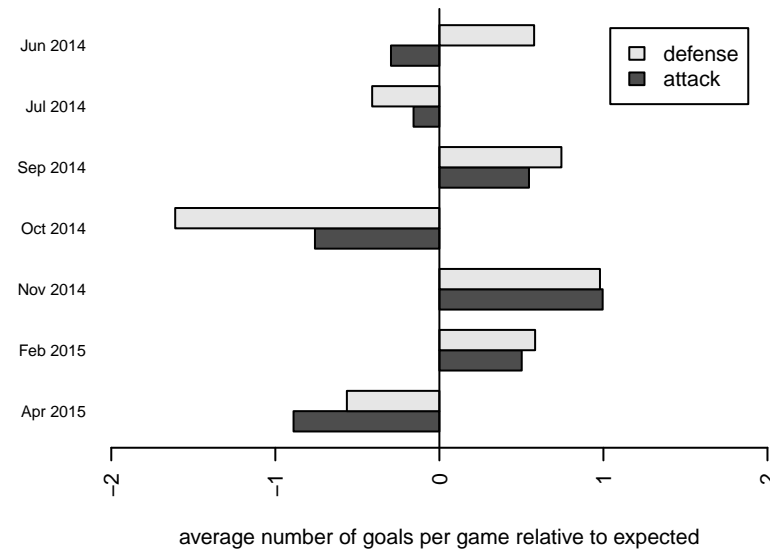
**attack and defense rating
relative to others at age
and all opponents in last 13 months**



Performance relative to 13 month average



Performance relative to 13 month average



| date | home | | away | | venue | pred.home | pred.away |
|------------|--------------------------------|---|--------------------------------|---|-------------------------------------|-----------|-----------|
| 2015-04-26 | PCU Red G01 | 0 | NEU Barcelona White G01 | 2 | 2014 Spr OYS G01 Division 1 Green | 1.07 | 1.24 |
| 2015-04-19 | PCU Red G01 | 0 | Irish United G01 | 5 | 2014 Spr OYS G01 Division 1 Green | 0.60 | 3.05 |
| 2015-04-18 | Grants Pass YSC Bulldogs G01 | 2 | PCU Red G01 | 0 | 2014 Spr OYS G01 Division 1 Green | 1.29 | 1.06 |
| 2015-04-11 | Westside Timbers Copa G01 | 0 | PCU Red G01 | 0 | 2014 Spr OYS G01 Division 1 Green | 1.17 | 0.84 |
| 2015-03-15 | PCU Red G01 | 1 | BSC Portland Black-Legends G01 | 2 | 2014 Spr OYS G01 Division 1 Green | 0.78 | 1.48 |
| 2015-02-28 | PCU Red G01 | 0 | HSC Tiki Taka G01 | 0 | 2014 Spr OYS G01 Division 1 Green | 0.92 | 1.78 |
| 2015-02-21 | Pacific FC Blue G01 | 2 | PCU Red G01 | 1 | 2014 Spr OYS G01 Division 1 Green | 1.49 | 0.79 |
| 2015-02-14 | BSC Portland Black-Legends G01 | 1 | PCU Red G01 | 3 | 2014 Spr OYS G01 Division 1 Green | 1.48 | 0.78 |
| 2014-11-16 | PCU Red G01 | 0 | Capital FC Timbers Black G01 | 0 | 2014 OYS Presidents Cup G01 | 0.94 | 1.60 |
| 2014-11-09 | Capital FC Timbers White G01 | 1 | PCU Red G01 | 5 | 2014 OYS Presidents Cup G01 | 0.48 | 2.15 |
| 2014-11-01 | PCU Red G01 | 2 | Washington Timbers Forest G01 | 0 | 2014 OYS Presidents Cup G01 | 0.93 | 1.85 |
| 2014-10-12 | Washington Timbers Green G01 | 1 | PCU Red G01 | 0 | 2014 PTT-B G01 Championship | 1.34 | 0.76 |
| 2014-10-11 | PCU Red G01 | 0 | HSC Tiki Taka G01 | 3 | 2014 PTT-B G01 Championship | 0.92 | 1.78 |
| 2014-10-05 | Irish United G01 | 7 | PCU Red G01 | 0 | 2014 PTT-B G01 Championship | 3.05 | 0.60 |
| 2014-09-28 | Capital FC Timbers Black G01 | 1 | PCU Red G01 | 2 | 2014 PTT-B G01 Championship | 1.60 | 0.94 |
| 2014-09-27 | PCU Red G01 | 3 | Pacific FC White Ice G01 | 0 | 2014 PTT-B G01 Championship | 0.71 | 1.56 |
| 2014-09-21 | Eastside Timbers Black G01 | 0 | PCU Red G01 | 2 | 2014 PTT-B G01 Championship | 0.87 | 1.59 |
| 2014-09-20 | PCU Red G01 | 0 | Washington Timbers Green G01 | 0 | 2014 PTT-B G01 Championship | 0.76 | 1.34 |
| 2014-09-14 | BSC Portland Black-Legends G01 | 2 | PCU Red G01 | 0 | 2014 PTT-B G01 Championship | 1.48 | 0.78 |
| 2014-09-06 | PCU Red G01 | 2 | Capital FC Timbers Black G01 | 1 | 2014 PTT-B G01 Championship | 0.94 | 1.60 |
| 2014-07-27 | RSA Elite Heather G01 | 3 | PCU Red G01 | 1 | 2014 Crossfire Select Cup GU13 Gold | 1.37 | 0.59 |
| 2014-07-26 | PCU Red G01 | 2 | Lake Hills Extreme G01 | 1 | 2014 Crossfire Select Cup GU13 Gold | 2.33 | 1.10 |
| 2014-07-26 | Crossfire Select Wilkinson G01 | 0 | PCU Red G01 | 0 | 2014 Crossfire Select Cup GU13 Gold | 1.10 | 1.09 |
| 2014-07-25 | PCU Red G01 | 2 | CWSA Navy G01 | 4 | 2014 Crossfire Select Cup GU13 Gold | 0.78 | 2.55 |
| 2014-07-13 | NEU Barcelona White G01 | 3 | PCU Red G01 | 1 | 2014 PCU Summer Classic U13 Gold | 1.24 | 1.07 |
| 2014-07-12 | PCU SESC Dynamite G01 | 1 | PCU Red G01 | 1 | 2014 PCU Summer Classic U13 Gold | 1.64 | 1.12 |
| 2014-07-12 | PCU Red G01 | 0 | Washington Timbers Green G01 | 0 | 2014 PCU Summer Classic U13 Gold | 0.76 | 1.34 |
| 2014-07-11 | MVP Marauders Navy G01 | 4 | PCU Red G01 | 0 | 2014 PCU Summer Classic U13 Gold | 2.39 | 0.53 |

| date | home | | away | | venue | pred.home | pred.away |
|-------------|-----------------------|---|-------------------------|---|--|------------------|------------------|
| 2014-06-29 | PCU Red G01 | 1 | Blackhills FC Black G01 | 0 | 2014 Clash At the Border Silver/Bronze U | 1.13 | 1.11 |
| 2014-06-27 | Kent United White G01 | 0 | PCU Red G01 | 2 | 2014 Clash At the Border Silver/Bronze U | 0.32 | 2.73 |
| 2014-06-27 | PCU Red G01 | 3 | ASE Royal G01 | 0 | 2014 Clash At the Border Silver/Bronze U | 3.02 | 0.31 |